

**INDEX OF DOCUMENTS HELD ON THE PETROLEUM REGISTER FOR
ASSOCIATED ACTIVITIES LICENCE AAL 175**

- | | | |
|----|---------------|--|
| 1. | 16 March 2012 | Grant of Associated Activities Licence AAL 175.

Interests in the licence are:-

Victoria Oil Exploration (1977) Pty Ltd 100% |
| 2. | 16 March 2012 | Memorandum entering grant of licence on the public register. |
| 3. | 22 March 2012 | Gazettal of grant of licence. |

PETROLEUM AND GEOTHERMAL ENERGY ACT 2000

*Grant of Associated Activities Licence—AAL 175**(Adjunct to Petroleum Exploration Licence PEL 88)*

NOTICE is hereby given that the undermentioned Associated Activities Licence has been granted with effect from 16 March 2012, under the provisions of the Petroleum and Geothermal Energy Act 2000, pursuant to delegated powers dated 1 October 2009.

No. of Licence	Licensees	Locality	Reference
AAL 175	Victoria Oil Exploration (1977) Pty Ltd	Cooper Basin	F2012/000084

Description of Area

All that part of the State of South Australia, bounded as follows:

Commencing at a point being the intersection of latitude 26°48'25"S GDA94 and longitude 140°50'54"E GDA94, thence east to longitude 140°50'59"E GDA94, south to latitude 26°48'35"S GDA94, east to longitude 140°51'01"E GDA94, south to latitude 26°48'43"S GDA94, west to longitude 140°51'00"E GDA94, south to latitude 26°48'50"S GDA94, west to longitude 140°50'58"E GDA94, south to latitude 26°48'52"S GDA94, west to longitude 140°50'55"E GDA94, south to latitude 26°48'54"S GDA94, east to longitude 140°50'57"E GDA94, south to latitude 26°48'56"S GDA94, east to longitude 140°50'59"E GDA94, south to latitude 26°48'58"S GDA94, east to longitude 140°51'00"E GDA94, south to latitude 26°49'01"S GDA94, west to longitude 140°50'54"E GDA94, north to latitude 26°48'56"S GDA94, west to longitude 140°50'48"E GDA94, south to latitude 26°49'02"S GDA94, west to longitude 140°50'38"E GDA94, north to latitude 26°49'00"S GDA94, west to longitude 140°50'36"E GDA94, north to latitude 26°48'57"S GDA94, west to longitude 140°50'34"E GDA94, north to latitude 26°48'55"S GDA94, west to longitude 140°50'32"E GDA94, north to latitude 26°48'53"S GDA94, west to longitude 140°50'30"E GDA94, north to latitude 26°48'40"S GDA94, east to longitude 140°50'32"E GDA94, north to latitude 26°48'37"S GDA94, east to longitude 140°50'34"E GDA94, north to latitude 26°48'35"S GDA94, east to longitude 140°50'38"E GDA94, north to latitude 26°48'32"S GDA94, east to longitude 140°50'39"E GDA94, north to latitude 26°48'29"S GDA94, east to longitude 140°50'41"E GDA94, north to latitude 26°48'26"S GDA94, east to longitude 140°50'54"E GDA94, and north to the point of commencement.

Area: 0.74 km² approximately.

Dated 16 March 2012.

B. A. GOLDSTEIN,
Executive Director,
Energy Resources Division
Department for Manufacturing, Innovation, Trade, Resources and Energy
Delegate of the Minister for Mineral Resources and Energy

Petroleum and Geothermal Energy Act 2000
S.115

MEMORANDUM

ASSOCIATED ACTIVITIES LICENCE
AAL 175

1. This Licence granted on 16 March 2012 is hereby entered on the public register.
2. Interest in the licence are:-

Victoria Oil Exploration (1977) Pty Ltd 100%



BARRY A. GOLDSTEIN
Executive Director
Energy Resources Division
Department for Manufacturing, Innovation, Trade, Resources and Energy
Delegate of the Minister for Mineral Resources and Energy

Date: 16 March 2012

File: F2012/000084

Petroleum and Geothermal Energy Act 2000

ASSOCIATED ACTIVITIES LICENCE

AAL 175

I, BARRY ALAN GOLDSTEIN, Executive Director Energy Resources Division, Department for Manufacturing, Innovation, Trade, Resources and Energy, in the State of South Australia, pursuant to the provisions of the *Petroleum and Geothermal Energy Act 2000* and all other enabling powers, for and on behalf of Tom Koutsantonis, Minister for Mineral Resources and Energy (Minister), pursuant to delegated powers dated 1 October 2009, HEREBY GRANT to

Victoria Oil Exploration (1977) Pty Ltd
ACN 008 898 431

(hereinafter referred to as the Licensee) an Associated Activities Licence as an adjunct to Petroleum Exploration Licence PEL 88, in respect of the area set out below, to have effect from *16 March 2012* and to expire on *15 March 2013* and carrying the right of renewal subject to the provisions of the *Petroleum and Geothermal Energy Act 2000*.

BAV

DESCRIPTION OF AREA

The land comprised in this licence is that part of the State of South Australia described in the Schedule hereto.

CONDITIONS

1. During the term of the licence, the Licensee may carry out or cause to be carried out, the Cordillo 3D Seismic Survey within the area as defined in the Schedule hereto.
2. The Licensee must:
 - (a) upon commencement of regulated activities under this licence, maintain in force during the term of this licence public liability insurance to cover regulated activities under this licence (including sudden and accidental pollution) in the name of the Licensees for a sum not less than twenty million dollars (\$20,000,000.00) or such greater sum as specified by the Minister, and make such amendments to the terms and conditions of the insurance as the Minister may from time to time require;
 - (b) upon request by the Minister, provide the Minister with a cover note or certificate of currency of the insurance policy referred to in paragraph (a).
3. The Minister in specifying the levels of insurance accepts no liability for the completeness of their listing, the adequacy of the sum insured, the limit of liability, the scoped coverage, or the conditions or exclusions of these insurances in respect to how they may or may not respond to any loss, damage or liability.

Date: 16 March 2012

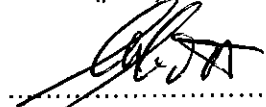


BARRY A. GOLDSTEIN
Executive Director
Energy Resources Division
Department for Manufacturing, Innovation, Trade, Resources and Energy
Delegate of the Minister for Mineral Resources and Energy

Executed for and on behalf of **Victoria Oil Exploration (1977) Pty Ltd** by its Authorised Representative:

S.G. SCOTT

.....
Name (print)



.....
Authorised Representative Signature

29/02/2012

.....
Date

THE SCHEDULE
ASSOCIATED ACTIVITIES LICENCE

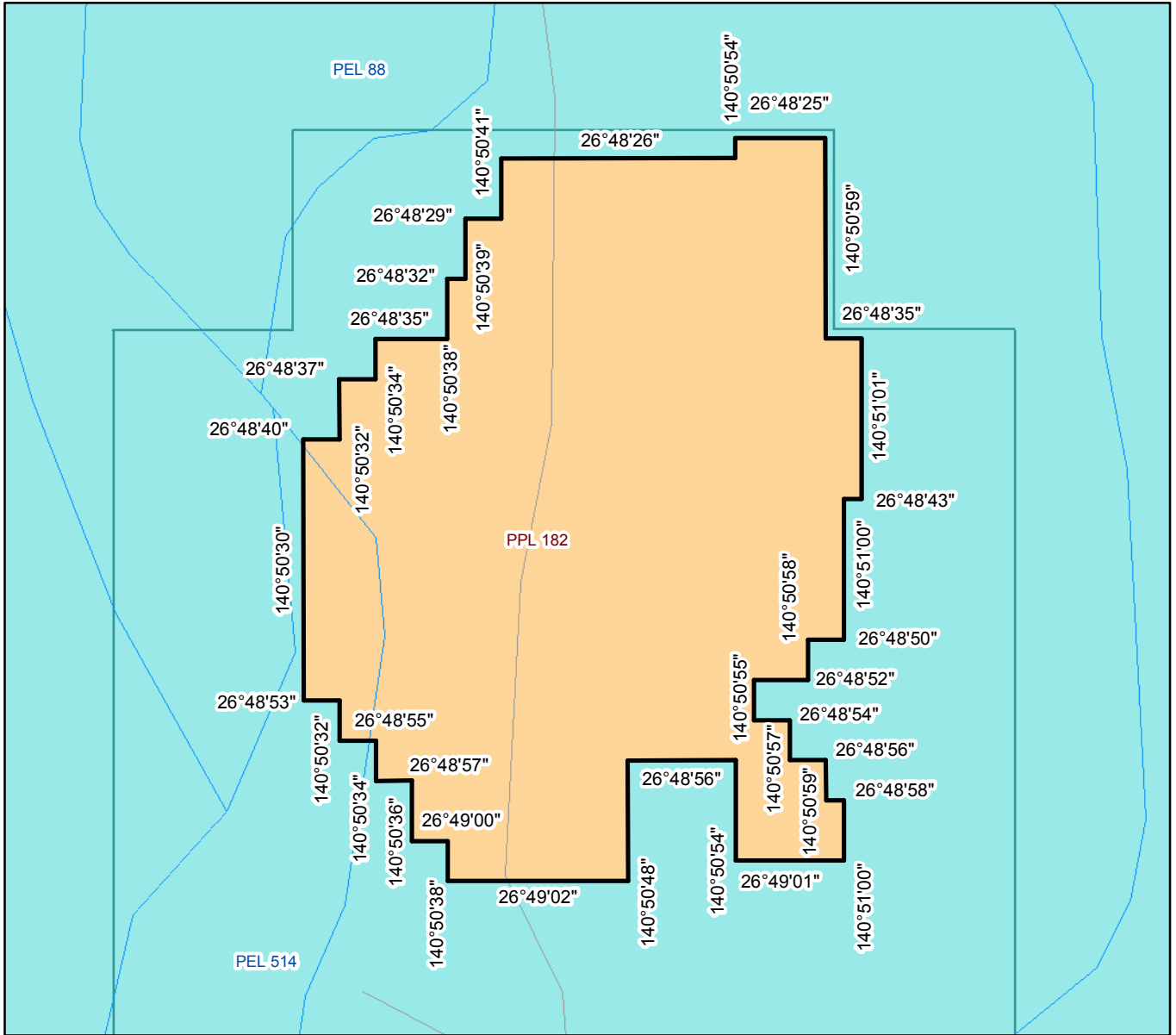
AAL 175

Description of Area

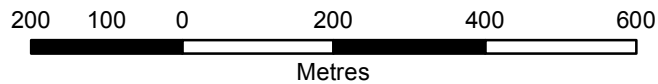
All that part of the State of South Australia, bounded as follows:-

Commencing at a point being the intersection of latitude 26°48'25"S GDA94 and longitude 140°50'54"E GDA94, thence east to longitude 140°50'59"E GDA94, south to latitude 26°48'35"S GDA94, east to longitude 140°51'01"E GDA94, south to latitude 26°48'43"S GDA94, west to longitude 140°51'00"E GDA94, south to latitude 26°48'50"S GDA94, west to longitude 140°50'58"E GDA94, south to latitude 26°48'52"S GDA94, west to longitude 140°50'55"E GDA94, south to latitude 26°48'54"S GDA94, east to longitude 140°50'57"E GDA94, south to latitude 26°48'56"S GDA94, east to longitude 140°50'59"E GDA94, south to latitude 26°48'58"S GDA94, east to longitude 140°51'00"E GDA94, south to latitude 26°49'01"S GDA94, west to longitude 140°50'54"E GDA94, north to latitude 26°48'56"S GDA94, west to longitude 140°50'48"E GDA94, south to latitude 26°49'02"S GDA94, west to longitude 140°50'38"E GDA94, north to latitude 26°49'00"S GDA94, west to longitude 140°50'36"E GDA94, north to latitude 26°48'57"S GDA94, west to longitude 140°50'34"E GDA94, north to latitude 26°48'55"S GDA94, west to longitude 140°50'32"E GDA94, north to latitude 26°48'53"S GDA94, west to longitude 140°50'30"E GDA94, north to latitude 26°48'40"S GDA94, east to longitude 140°50'32"E GDA94, north to latitude 26°48'37"S GDA94, east to longitude 140°50'34"E GDA94, north to latitude 26°48'35"S GDA94, east to longitude 140°50'38"E GDA94, north to latitude 26°48'32"S GDA94, east to longitude 140°50'39"E GDA94, north to latitude 26°48'29"S GDA94, east to longitude 140°50'41"E GDA94, north to latitude 26°48'26"S GDA94, east to longitude 140°50'54"E GDA94, and north to the point of commencement.

AREA: 0.74 square kilometres approximately.



SCALE 1: 10 000



Note: There is no warranty that the boundary of this licence is correct in relation to other features of the map. The boundary is to be ascertained by reference to the Geocentric Datum of Australia (GDA94) and the schedule.

THE PLAN HEREINBEFORE REFERRED TO
ASSOCIATED ACTIVITIES LICENCE NO: 175

